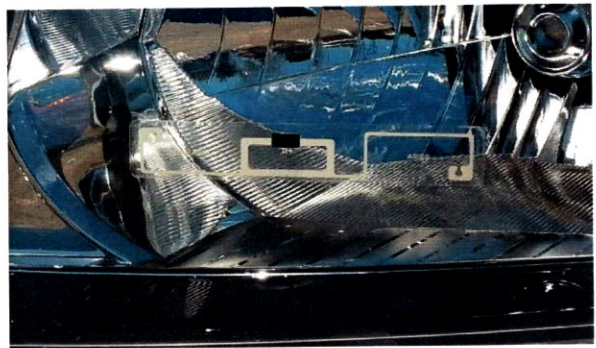


## Headlamp Tag Mounting Instructions

Headlamp Mount Tags, supplied by Infinity RFID Inc., are high performance radio frequency identification (RFID) devices and have been designed to be installed on the exterior of a vehicle, specifically on surfaces that are made of plastic or fiberglass. When properly installed, headlamp tags are designed to not interfere or obstruct with the headlight's beam per DOT specification. In addition, they offer an unmatched level of security as their design does not allow them to be removed or transferred once mounted to the vehicle.

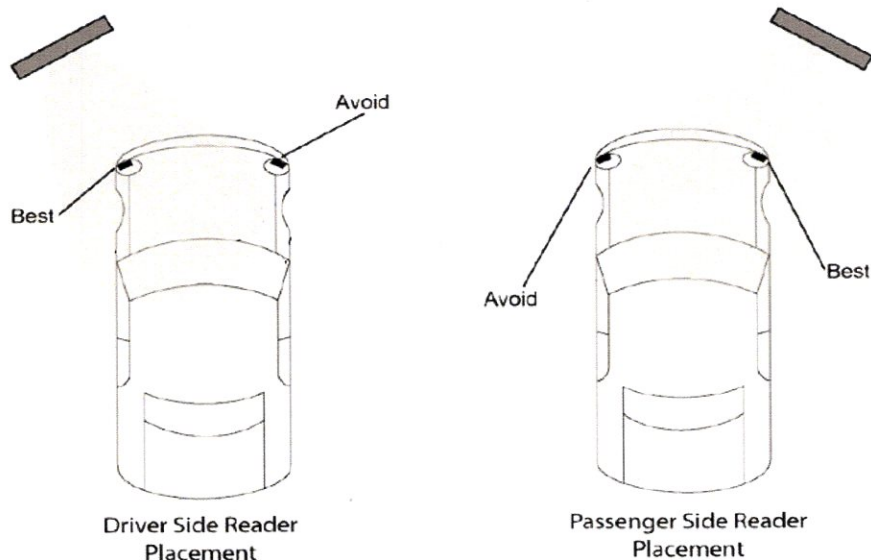
The Headlamp Tags, supplied by Infinity RFID Inc., have been tested to withstand a variety of environmental conditions such as regular car washing (automated and by hand), UV exposure, vibration, windblown sand and temperature as well as humidity cycles. Although this tag has been engineered for the rigors of outdoor use once it is installed, it must however be handled carefully during the installation process.



**Note** – Please consult your local and state vehicle ordinances to determine the allowable mounting locations for this type of tag. Due to the wide variance in headlight design, this document is intended as a general guide and not inclusive of all vehicle makes and models. This document serves to supply only general guidelines for the correct handling and installation of the tag.

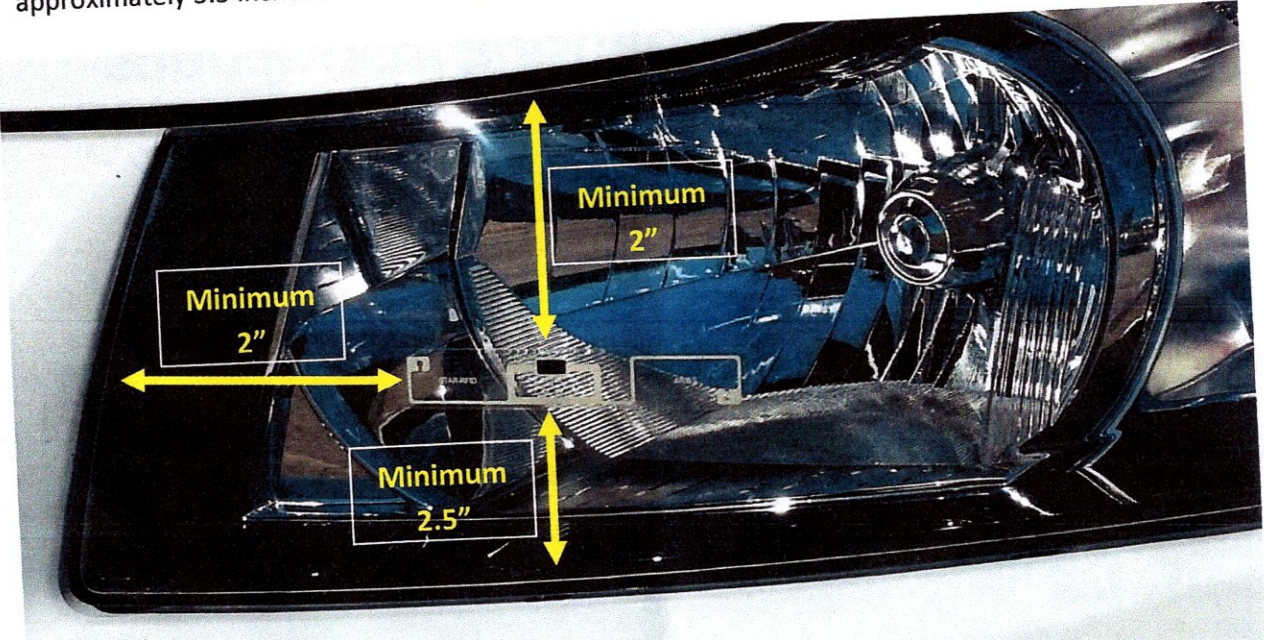
### Choosing a Proper Mounting Location

For optimum performance, the RFID tag must be installed on the headlight lens or other suitable mounting location that is facing the RFID reader during normal driving.

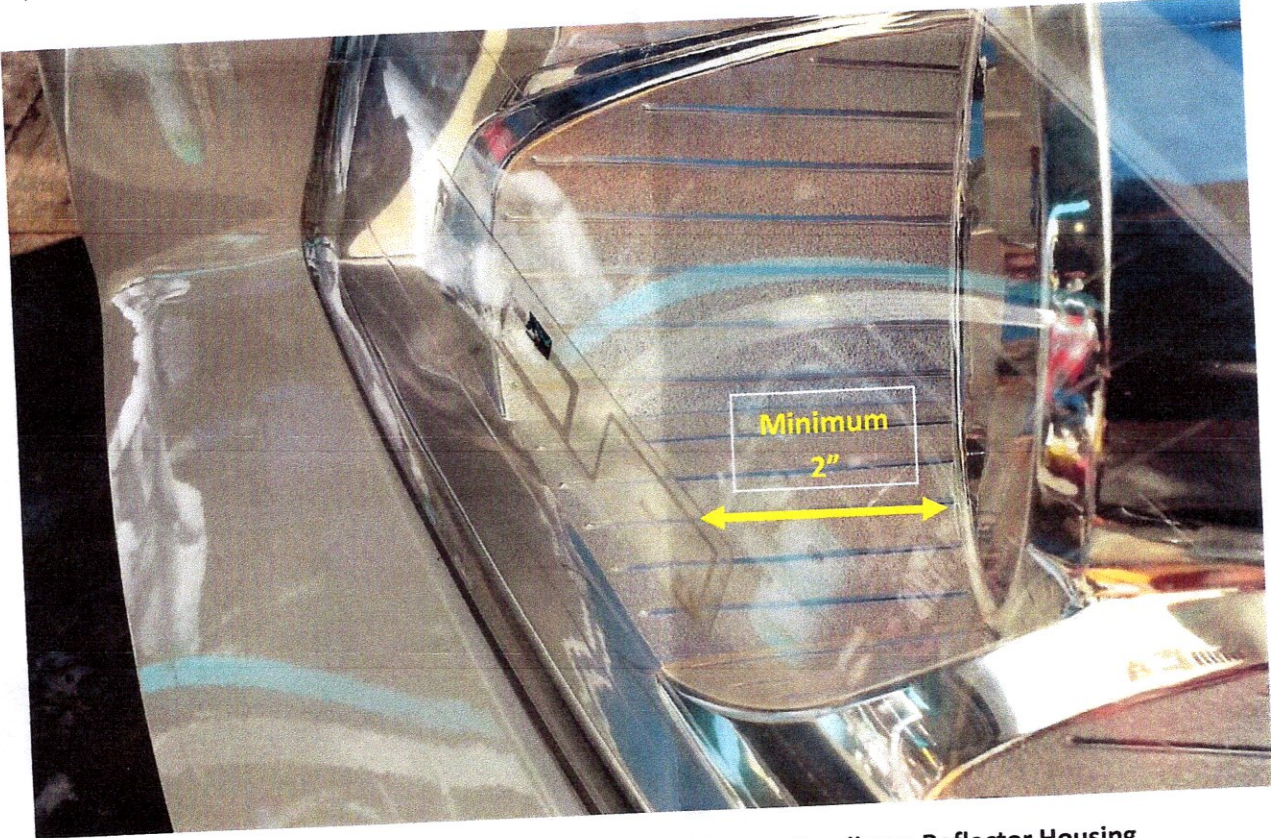




Choose a mounting location for the tag at least 2" from any materials containing metal and approximately 3.5 inches from the bottom reflector.



Clearance Shown for Distance between Hood, Body Panel & Bumper



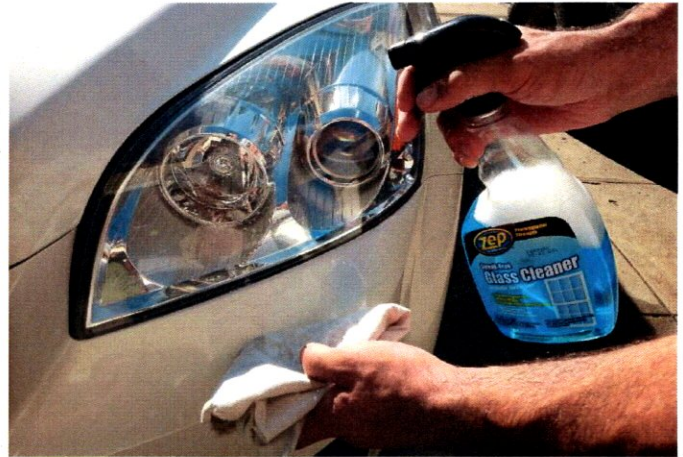
Clearance Shown for Distance between Headlamp Reflector Housing



## Tag Handling & Installation

**Step 1** - Make sure that the *intended mounting surface is clean and free of any contaminants.*

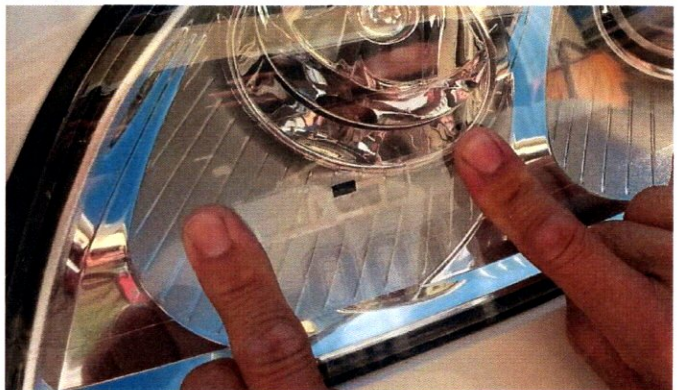
**Note** - Handle the tags with care during installation. Do not excessively bend or distort the tag when removing it from the liner.



**Step 2** - Transfer the tag to the location on the vehicle that you have determined suitable for your application. It is best to apply the tag by the edges as shown in the picture below.



**Step 3** - Smooth out the tag to ensure complete adhesion and remove any air pockets.



**Note** - Once the tag has been mounted, **do not attempt to remove the tag**, this will damage the tag.



## Alternative Mounting

If mounting to the vehicle's headlamp is not feasible, you may also choose to mount the tag on other plastic surfaces, such as the vehicle's bumper, valance or side mirror. Many of the preceding guidelines will still apply and the tag must still be mounted a minimum 2" from any metal structures. This includes any metal structures behind the bumper, such as metal grilles, bumper mounts or the vehicle's frame.



## Cure Time

Once the tag has been installed on the vehicle, there will be a period of time necessary to allow the tag's adhesive to cure. Due to temperature and humidity variations the total cure time may vary. Most applications will experience an 80% cure of the adhesive within 1 hour and full adhesive cure within 24 hours of application. **Please do not wash the vehicle or disturb the tag for 24 hours after installation.**

*Infinity* **RFID**, *Inc.*

[www.infinityRFIDinc.com](http://www.infinityRFIDinc.com)